



UGI Utilities Inc. – Electric Division
Distributed Customer Generation Information



Small Generator (5MW or less) Interconnection Requirements
Small Generator Interconnection Process

The Pennsylvania Public Utility Commission (Commission) has established uniform standards for the interconnection of small distributed customer-generators to the electric distribution system. These standards identify the specific steps, timelines and technical requirements that must be met by both the electric distribution company (UGI) and the facility owner (customer-generator) to process and interconnect a distributed generator. In addition the Commission has issued regulations identifying metering requirements for distributed generators that qualify as a Tier I or Tier II alternate energy source.

The purpose of this document is to identify several key interconnection requirements as defined by the Commission as well as the process and the terms and conditions that govern the interconnection of distributed generation. Additional information as well as Commission regulations that address Alternative Energy can be found on the Commission website at http://www.puc.state.pa.us/electric/electric_alt_energy.aspx.

Definitions

Certificate of Completion - A certificate in a form approved by the Commission containing information about the interconnection equipment to be used, its installation and local inspections.

Customer-generator – A non-utility owner or operator of a net metered distributed generation system with a nameplate capacity of not greater than 50 kilowatts if installed at a residential service or not larger than 5,000 kilowatts at other customer service locations.

Net metering – The means of measuring the difference between the electricity supplied by an electric utility and the electricity generated by a customer-generator when the alternative energy generating system is intended primarily to offset part or all of the customer-generator's requirements for electricity.

Queue position--The order of a valid interconnection request, relative to all other pending valid interconnection requests, that is established based upon the date and time of receipt of the valid interconnection request by UGI.

Scoping meeting--A meeting between representatives of the interconnection customer and UGI conducted for the purpose of discussing alternative interconnection options, exchanging information including any electric distribution system data and earlier study evaluations that would be reasonably expected to impact interconnection options, analyzing information, and determining the potential feasible points of interconnection.

Small generator facility--The equipment used by an interconnection customer to generate, or store electricity that operates in parallel with the electric distribution system. A small generator facility typically includes an electric generator, prime mover, and the interconnection equipment required to safely interconnect with the electric distribution system.

Witness test--The utilities interconnection installation evaluation required by IEEE Standard 1547 Section 5.3 and the utilities witnessing of the commissioning test required

by IEEE Standard 1547 Section 5.4. For interconnection equipment that has not been certified, the witness test shall also include the witnessing by the utility of the on-site design tests as required by IEEE Standard 1547 Section 5.1 and witnessing by the utility of production tests required by IEEE Standard 1547 Section 5.2. All tests witnessed by the utility are to be performed in accordance with IEEE Standard 1547.1

Applicability

Interconnection

These guidelines apply to all interconnection requests for generating units up to 5,000 kilowatts nameplate capacity, designed to operate in parallel with the UGI Utilities Inc – Electric Division (UGI) electric distribution system (13.8kV or less). This document does not apply to larger units or any facility that intends to sell electricity to the Regional Transmission Operator (currently PJM). In these cases the owner of the proposed unit should initiate an interconnection request with PJM.

Net Metering

Applicability as defined in Rule 18 - Net Metering, of the UGI Electric Service Tariff (See Exhibit A).

Application Process

Interconnection requests may be submitted by existing UGI electric service customers or an interconnection customer that is not currently a UGI customer but that can provide proof of site control within the UGI service territory. Persons interested in submitting an interconnection request must complete and submit the following documentation appropriate to the review level required prior to installation:

- Level 1 Review: UGI Interconnection Application/Agreement – Part 1 which includes the Terms and Conditions for Interconnection (See Exhibit B).
- Level 2, 3 or 4 Review: UGI Interconnection Application for Level 2, 3 or 4 Review (See Exhibit C) and UGI Level 2, 3 or 4 Interconnection Agreement (See Exhibit D).
- Deposit of non-refundable application fee. See UGI website for fee schedule commensurate with Review Level.

Following installation and the successful completion of the appropriate reviews, inspections and Witness Test, the following must be completed:

- Level 1 Review: UGI Interconnection Application/Agreement – Part 2, Certificate of Completion (See Exhibit E).
- Level 2, 3 or 4 Review: Certificate of Completion (See Exhibit F).

Mail application to:
UGI Utilities Inc. – Electric Division
Attention: Distributed Generation
One UGI Center
Wilkes-Barre, PA 18711

-or- Email application to:
dginformation@ugi.com
Subject Line: Interconnection Request

Customer-generators that qualify for Net Metering may also complete and submit the Net Energy Metering Rider – Application for Service (See Exhibit G).

Interconnection Review Levels

The Commission has defined screening criteria and time-lines for specific review levels based on the type, size and complexity of the proposed interconnection request. As required the standards established by the Commission will be used to evaluate and process each interconnection request. The basic review levels are identified in Table 1 below.

Table 1

Review Levels	Interconnection Type/Equipment	Nameplate Capacity	Certified	UGI System Upgrade	Review Conditions
Level 1	Inverter Based Interconnection	10kW or less	Yes	No facility upgrades required	N/A
Level 2	Inverter Based Interconnection	5MW or less	Yes	No facility upgrades required ⁽¹⁾	Not approved under the Level 1 review
Level 3	Non-inverter Based	5MW or less	No	Facility upgrades may be necessary	Not qualified or not approved under the Level 1 or 2 review
Level 4	No Export Capability	5MW or less	N/A	No facility upgrades required	Does not qualify for a Level 1 or 2 review

(1) Except as permitted by an additional review under the standard small generator agreement.

Each subsequent level requires additional analysis and review to ensure a safe and reliable interconnection. UGI will make a determination and assign the project to the appropriate review level based on the screening criteria. Flowcharts identifying the process flow and timing for the Level 1 and 2 reviews are provided on the following pages. Levels 3 and 4 process flows are not included in this document.

Technical Standards

All interconnection requests shall be evaluated against the following technical standards (as amended and modified):

1. IEEE 1547 “Standard for Interconnecting Distributed Resources with Electric Power Systems”;
2. Underwriter Laboratories (UL) 1741 “Inverters, Converters and Controllers for Use in Independent Power Systems”;
- 3.

To be certified, interconnection equipment must comply with the above technical standards. In addition all generator installations and interconnections must meet all

applicable national, state and local construction and safety codes.

General Requirements

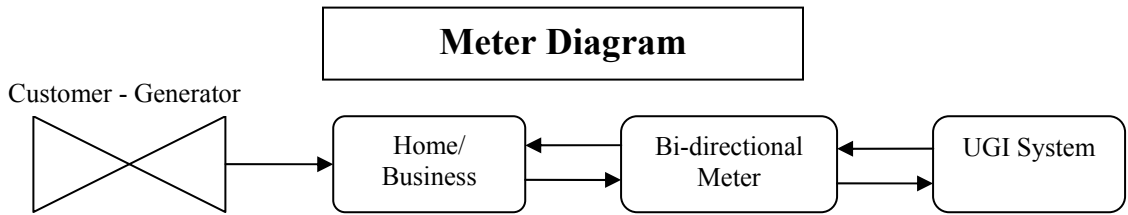
All interconnection requests reviewed under this process are subject to the following general requirements:

- Small generator facilities shall be capable of being isolated from the UGI system by means of a lockable, visible-break isolation device accessible by UGI. The isolation device shall be installed, owned and maintained by the owner of the small generation facility and located between the small generation facility and the point of interconnection. A draw-out type circuit breaker with a provision for padlocking at the draw-out position can be considered an isolation device for purposes of this requirement.
- An interconnection customer may elect to provide UGI access to an isolation device that is contained in a building or area that may be unoccupied and locked or not otherwise readily accessible to UGI, by installing lockbox provided by UGI that shall provide ready access to the isolation device. The interconnection customer shall install the lockbox in a location that is readily accessible by UGI and the interconnection customer shall permit UGI to affix a placard in a location of its choosing that provides clear instructions to UGI operating personnel on access to the isolation device.
- The owner of the distributed generator is responsible for the cost of any facility upgrades required for the interconnection of a distributed generator to the electric distribution system.

General Metering Provisions

A customer-generator facility that qualifies under UGI's Tariff Rule 18 - Net Metering, will be equipped by UGI with a single bi-directional meter that can measure and record the flow of energy (kilowatt-hours) in both directions. Once installed the meter is read on the customer's normal monthly meter reading cycle and the meter data is netted to calculate the customer's bill. (See Meter Diagram below). In any given month, when the customer generation is in excess of customer load, the excess will be applied to subsequent month billings. At the end of the annual period, the customer-generator will be compensated for any unapplied excess customer generation which occurred during the preceding year at the full retail value. The full retail value is UGI's price-to-compare at the customer-generators rate schedule..

The Net Metering provisions also provide for either virtual or physical meter aggregation on properties owned or leased and operated by a customer-generator within two (2) miles of the boundaries of the customer-generators property. Physical meter aggregation involves the physical rewiring of multiple meters/service to allow for a single meter to measure the electric service for that customer-generator. Physical meter aggregation is at the customer's expense. Virtual meter aggregation is the combination of meter information from multiple meters through UGI's billing system which does not require additional wiring. The customer-generator is responsible only for any incremental expense entailed in processing his account on a virtual meter aggregation basis.



1. In the above diagram the customer-generator is directly connected to the home/business through the existing service panel.
2. Energy produced by the customer-generator is supplied to the home/business and offsets part or all of the energy requirements (load) for that location normally supplied by UGI.
3. When the amount of energy produced by the customer-generator exceeds the load, the excess energy is supplied to the UGI system.
4. The bi-directional meter measures and records the energy (kWh) consumed by home/business and also any energy delivered by the customer-generator to the UGI system.

Example #1	Generated (kWh)	Customer Load (kWh)	Energy In (kWh)	Energy Out (kWh)
Hour 1	1.0	2.0	1.0	0.0
Hour 2	0.8	3.0	2.2	0.0
Hour 3	2.0	1.0	0.0	1.0
Hour 4	1.5	1.0	0.0	0.5
Hour 5	1.0	2.0	1.0	0.0
Total	6.3	9.0	4.2	1.5

Total In: 4.2 KWH
Total Out: 1.5 KWH

Difference: 2.7 KWH

Customer billed for 2.7 kWh net usage at their normal rate.

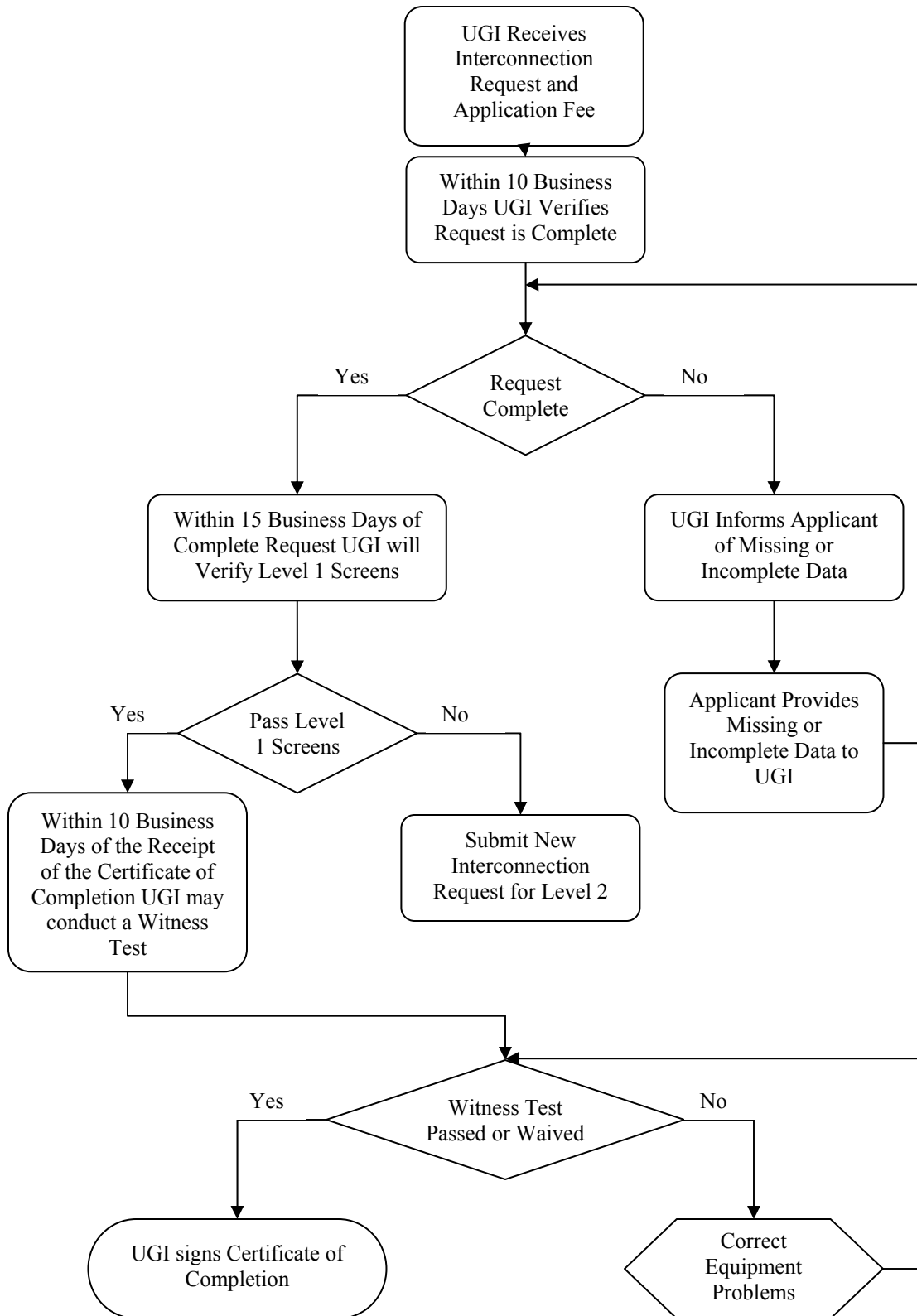
Example #2	Generated (kWh)	Customer Load (kWh)	Energy In (kWh)	Energy Out (kWh)
Hour 1	5.0	2.0	0.0	3.0
Hour 2	4.0	3.0	0.0	1.0
Hour 3	1.0	3.0	2.0	0.0
Hour 4	1.0	1.0	0.0	0.0
Hour 5	3.0	2.0	0.0	1.0
Total	14.0	11.0	2.0	5.0

Total In: 2.0 KWH
Total Out: 5.0 KWH

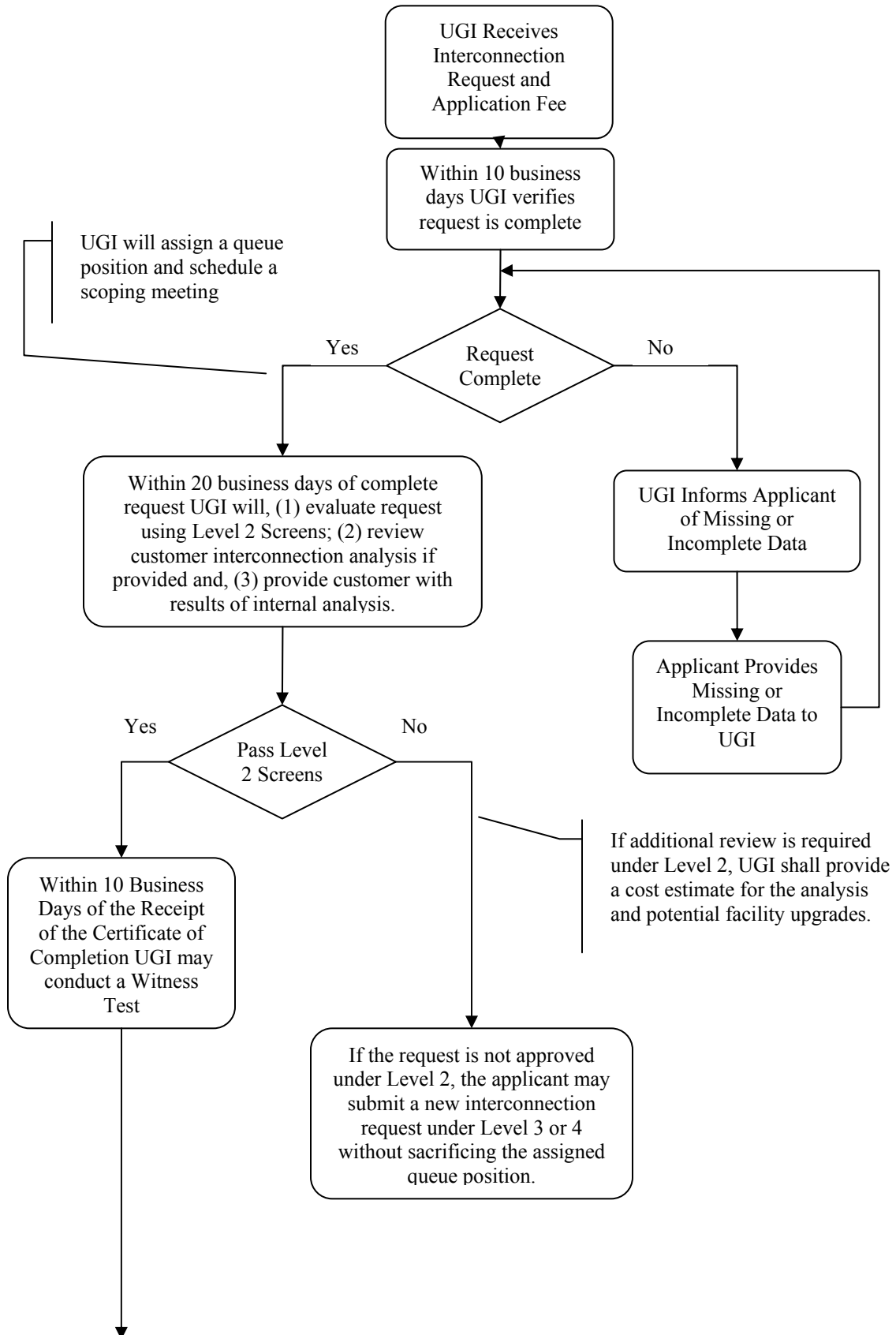
Difference: -3.0 KWH

Customer billed minimum charge for their rate and the net energy of 3 kWh delivered to the UGI system is carried over and applied to next month's bill.

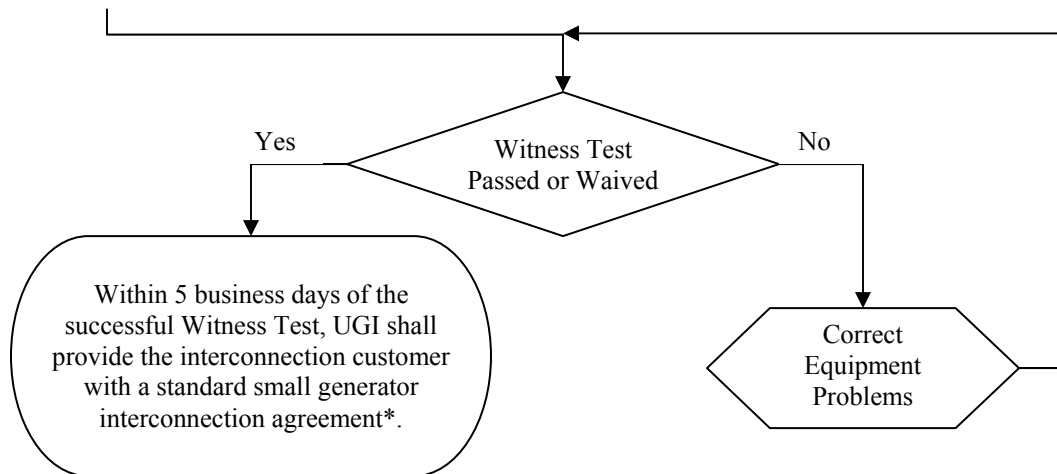
Level 1 Review Process



Level 2 Review Process



Level 2 Review Process Cont.



*** The small generator interconnection agreement is not final until:**

- **All milestones (construction, testing etc.) agreed to within the agreement are satisfied;**
- **The facility is approved by the appropriate electric code officials;**
- **The Certificate of Completion is provided to UGI;**
- **There is a successful or waived witness test.**

Exhibit A

RULES AND REGULATIONS

18. NET METERING

- 18-a Applicability. This rule sets forth the eligibility, terms and conditions applicable to Customers with installed qualifying renewable customer-owned generation using a net metering system.
- (1) Customer-generators served under Rate Schedules R, RWT, RTU, GS-1, GS-4, GS-5, TE, GLP, IH, and LP who install a device or devices which are, in the Company's judgment, subject to Commission review a bona fide technology for use in generating electricity from qualifying Tier I or Tier II alternative energy sources pursuant to Alternative Energy Portfolio Standards Act No. 2004-213 (Act 213) or Commission regulations and which will be operated in parallel with the Company's system are eligible for net metering.
 - (2) This rule is available to installations where any portion of the electricity generated by the renewable energy generating system offsets part or all of the customer-generator's requirements for electricity.
 - (3) A renewable customer-generator, under this rule, is a non-utility owner or operator of a net metered generation system with a nameplate capacity of not greater than 50 kilowatts if installed at a residential service (Rate R, RWT or RTU) or not larger than 3,000 kilowatts at other customer service locations (Rate GS-1, GS-4, GS-5, TE, GLP, IH, and LP), except for Customers whose systems are above 3 megawatt and up to 5 megawatts who make their systems available to operate in parallel with the Company during grid emergencies as defined by the regional transmission organization or where a microgrid is in place for the purpose of maintaining critical infrastructure such as homeland security assignments, emergency services facilities, hospitals, traffic signals, wastewater treatment plants or telecommunications facilities provided that technical rules for operating generators interconnected with facilities of the Company have been promulgated by the Institute of Electrical and Electronic Engineers ("IEEE") and the Commission.
 - (4) Qualifying renewable energy installations are limited to Tier I and Tier II alternative energy sources as defined by Act 213 and Commission Regulations. The Customer's equipment must conform to the Commission's Interconnection Standards and Regulations pursuant to Act 213. The net metering rules are not applicable when the source of supply is service purchased from a neighboring electric utility under Borderline Service.
 - (5) Service is available upon request to renewable customer-generators on a first come, first served basis so long as the total rated generating capacity installed by renewable customer-generator facilities does not adversely impact service to other Customers and does not compromise the protection scheme(s) employed on the Company's electric distribution system.
- 18-b Metering Provisions. A Customer may select one of the following metering options in conjunction with service under applicable Rate Schedule R, RWT, RTU, GS-1, GS-4, GS-5, TE, GLP, IH, and LP.
- (1) A customer-generator facility used for net metering shall be equipped with a single bi-directional meter that can measure and record the flow of electricity in both directions at the same rate. A dual meter arrangement may be substituted for a single bi-directional meter at the Company's expense.

Exhibit A

RULES AND REGULATIONS (continued)

18. NET METERING

- (2) If the customer-generator's existing electric metering equipment does not meet the requirements under option (1) above, the Company shall install new metering equipment for the customer-generator at the Company's expense. Any subsequent metering equipment change necessitated by the customer-generator shall be paid for by the customer-generator. The customer-generator has the option of utilizing a qualified meter service provider to install metering equipment for the measurement of generation at the customer-generator's expense.
- (3) Additional metering equipment for the purpose of qualifying alternative energy credits owned by the customer-generator shall be paid for by the customer-generator. The Company shall take title to the alternative energy credits produced by a customer-generator where the customer-generator has expressly rejected title to the credits. In the event that the Company takes title to the alternative energy credits, the Company will pay for and install the necessary metering equipment to qualify the alternative energy credits. The company shall, prior to taking title to any alternate energy credits, fully inform the customer-generator of the potential value of those credits and options available to the customer-generator for their disposition.
- (4) Meter aggregation on properties owned or leased and operated by a customer-generator shall be allowed for purposes of net metering. Meter aggregation shall be limited to meters located on properties within two (2) miles of the boundaries of the customer-generator's property. Meter aggregation shall only be available for properties located within the Company's service territory. Physical meter aggregation shall be at the customer-generator's expense. The Company shall provide the necessary equipment to complete physical aggregation. If the customer-generator requests virtual meter aggregation, it shall be provided by the Company at the customer-generator's expense. The customer-generator shall be responsible only for any incremental expense entailed in processing his account on a virtual meter aggregation basis.

18-c Billing Provisions. The following billing provisions apply to customer-generators in conjunction with service under applicable Rate Schedule R, RWT, RTU, GS-1, GS-4, GS-5, TE, GLP, IH, and LP.

- (1) The customer-generator will receive a credit for each kilowatt-hour received by the Company up to the total amount of electricity delivered to the Customer during the billing period at full retail rate, consistent with Commission regulations. On an annual basis, the Company will compensate the customer-generator for kilowatt-hours received from the customer-generator in excess of the kilowatt hours delivered by Company to the customer-generator during the preceding year at the "full retail value for all energy produced" consistent with Commission regulations. The customer-generator is responsible for the customer charge, demand charge and other applicable charges under the applicable Rate Schedule.
- (2) If the Company supplies more kilowatt-hours of electricity than the customer-generator facility feeds back to the Company's system during the billing period, all charges of the appropriate rate schedule shall be applied to the net kilowatt-hours of electricity that the Company supplied. The customer-generator is responsible for the customer charge, demand charge and other applicable charges under the applicable Rate Schedule.

Exhibit A

RULES AND REGULATIONS (continued)

18. NET METERING

- (3) For customer-generators involved in virtual meter aggregation programs, a credit shall be applied first to the meter through which the generating facility supplies electricity to the distribution system, then through the remaining meters for the customer-generator's account equally at each meter's designated rate. Virtual meter aggregation is the combination of readings and billing for all meters regardless of rate class on properties owned or leased and operated by a customer-generator by means of the Company's billing process, rather than through physical rewiring of the customer-generator's property for a physical, single point of contact. The customer-generators are responsible for the customer charge, demand charge and other applicable charges under the applicable Rate Schedule.

- 18-d Application. Customer-generators seeking to receive service under the provisions of this rule must submit a written application to the Company demonstrating compliance with the Net Metering provisions and quantifying the total rated generating capacity of the customer-generator facility.
- 18-e Minimum Charge. The Minimum Charges under Rate Schedule R, RWT, RTU, GS-1, GS-4, GS-5, TE, GLP, IH, and LP apply for installations under the net metering rules.
- 18-f Bills rendered by the Company under this rule shall be subject to charges and fees applicable to Rate Schedules R, RWT, RTU, GS-1, GS-4, GS-5, TE, GLP, IH, and LP.

Exhibit B

UGI INTERCONNECTION APPLICATION/AGREEMENT - PART 1

With Terms and Conditions for Interconnection

For a Level 1 Review (Certified Inverter-based Units of 10kW and under)

(Application & Conditional Agreement – to be filled out prior to installation)

CUSTOMER GENERATOR CONTACT INFORMATION

Legal Name and Mailing Address of Customer-Generator: (if an Individual, Individual's Name)

Name: _____

Mailing Address: _____

City: _____ State: _____ Zip Code: _____

Contact Person (If other than Above): _____

Mailing Address (If other than Above): _____

Telephone (Daytime): _____ (Evening): _____

Facsimile Number: _____ E-Mail Address: _____

Alternative Contact Information: (if different from Customer-Generator above)

Name: _____

Mailing Address: _____

City: _____ State: _____ Zip Code: _____

Telephone (Daytime): _____ (Evening): _____

Facsimile Number: _____ E-Mail Address: _____

The Customer-Generator Facility's Information:

Facility Address: _____

City: _____ State: PA Zip Code: _____

Nearest Crossing Street: _____

Electric Distribution Company ("UGI"): UGI Utilities Inc. – Electric Division

Account #: _____ Meter #: _____

Current Annual Energy Consumption: _____ kWh Estimated In-service Date: _____

Application Fee Enclosed¹: _____ Inverter Type: _____

Energy Source: _____ Manufacturer: _____

Number of Units²: _____ Model Number of Inverter: _____

Inverter Rating: _____ kW_{AC} Ampere Rating: _____ Amps_{AC} Number of Phases: _____

Voltage Rating: _____ V_{AC}, DC Source Rating: _____ kW_{DC} Nominal DC Voltage: _____ V_{DC}

Power Factor: _____ %, Frequency: _____ Hz, IEEE1547/UL1741 Certification³: _____

Utility Accessible Disconnect or Lock Box: _____

One-line Diagram Attached (Required): _____ Site Plan Attached (Required): _____

Do you plan to export power? _____

If Yes, Estimated Maximum: _____ kW_{AC}, Estimated Gross Annual Energy Production: _____ kWh

Exhibit B

Equipment Installation Contractor: (Indicate by owner if applicable)

Name: _____

Mailing Address: _____

City: _____ State: _____ Zip Code: _____

Contact Person (If other than Above): _____

Telephone (Daytime): _____ (Evening): _____

Facsimile Number: _____ E-Mail Address: _____

Electrical Contractor: (If applicable)

Name: _____

Mailing Address: _____

City: _____ State: _____ Zip Code: _____

Contact Person (If other than Above): _____

Telephone (Daytime): _____ (Evening): _____

Facsimile Number: _____ E-Mail Address: _____

Customer-Generator Insurance Disclosure:

The attached Terms and Conditions contain provisions related to liability, and indemnification and should be carefully considered by the Customer-Generator. The Customer-Generator is not required to obtain liability insurance coverage as part of this Application/Agreement; however, the Customer-Generator is advised to consider obtaining appropriate coverage.

Customer-Generator Signature⁴:

I hereby certify that: 1) I have read and understand the Terms and Conditions which are attached hereto by reference and are made a part of this Application/Agreement; and 2) to the best of my knowledge, all of the information provided in this Application/Agreement is true and I agree to abide by the attached Terms and Conditions, including the application process set forth therein.

Customer-Generator Signature: _____ Date: _____

Printed Name: _____ Title: _____

Conditional Approval to Interconnect Customer-Generator Facility: (for Use by UGI Only)

The requested information is complete and interconnection of the Customer-Generator Facility is approved contingent upon the Terms and Conditions of this Agreement, the return of a duly executed Certificate of Completion, verification of electrical inspection and successful witness test or UGI waiver thereof.

UGI Signature: _____ Date: _____

Printed Name: _____ Title: _____

¹ The Applicant shall deposit a non refundable application fee which is approved by the Commission and is listed on the UGI website.

² Attach additional sheets as necessary in the event of multiple units of various types/sizes.

³ The applicant is encouraged to provide evidence of IEEE1547/UL1741 Test Certification with this application, and may be required to do so in the event such evidence is not readily accessible to UGI.

⁴ The Applicant shall notify UGI of any changes to the proposed Customer Generator Facility that would be subject to the criteria for a level 1 review (E.G., Inverter Manufacturer/Model Number, Size, etc.)

Exhibit B

UGI Utilities Inc. Interconnection Application/Agreement Terms and Conditions for Interconnection

For a Level 1 Review (Certified Inverter-based Units of 10kW and under)

1. **Construction of the Customer-Generator Facility.** The Customer-Generator may proceed to construct (including operational testing not to exceed 2 hours) the Customer-Generator Facility once the approval to install the Customer-Generator Facility has been received from UGI.

The Customer-Generator Facility shall be constructed in accordance with information provided in Part 1 of the Interconnection Application/Agreement, IEEE 1547 and the Commission's regulations.

Once an Interconnection Request is deemed complete, any modification to the proposed Customer-Generator Facility that would affect the application review criteria for a Level 1 review that is not agreed to in writing by UGI, shall require submission of a new Interconnection Request.

2. **Interconnection and Operation.** The Customer-Generator may interconnect and operate the Customer-Generator Facility with UGI's system once all of the following have occurred:
 - 2.1. **Electrical Inspection:** Upon completing construction, the Customer-Generator will have the Customer-Generator Facility inspected or otherwise certified by the local electrical wiring inspection authority having jurisdiction, that the facility meets the requirements of the National Electric Code.
 - 2.2. **Certificate of Completion:** The Applicant shall provide UGI with a completed copy of the Certificate of Completion, including evidence of the electrical inspection by the local authority having jurisdiction. The evidence of completion of the electrical inspection may be provided on inspection forms used by local inspecting authorities.
 - 2.3. **Inspection:** UGI has either completed its inspection or waived the right to inspection in the Application/Agreement as follows:
 - 2.3.1. **UGI Right of Inspection.** After receipt of the Certificate of Approval, UGI will, upon reasonable notice (minimum of 10-days notice as noted in 2.3.2 below) and at a mutually convenient time, conduct an inspection of the Customer-Generator Facility and observe a Witness Test to ensure that all equipment has been appropriately installed and that all electrical connections have been made as required.
 - 2.3.2. **Witness Test.** For Level 1 review projects only, if UGI does not inspect the installation within 10 business days, or by mutual agreement of the Parties, the Witness Test is deemed waived.
 - 2.4. **Metering:** Revenue quality metering equipment shall be installed and tested by UGI. (Note: UGI may allow interconnected operations prior to the meter installation.)
 - 2.5. **Acceptance:** UGI's representative has signed Part 2, the Certificate of Completion, approving the facility for energization.

Exhibit B

3. **Periodic Testing.** All interconnection-related protective functions and associated batteries shall be periodically tested at intervals specified by the manufacturer, system integrator, or authority that has jurisdiction over the Customer-Generator Facility interconnection. Periodic test reports or a log for inspection shall be maintained.
4. **Safe Operations and Maintenance.** The Customer-Generator shall be fully responsible to operate, maintain, and repair the Customer-Generator Facility as required to ensure that the Customer-Generator Facility complies at all times with the interconnection standards it has been certified to meet.
5. **Access.** UGI shall have access to the metering equipment and the disconnect/isolation device of the Customer-Generator Facility at all times. UGI shall provide reasonable notice to the Customer-Generator, when possible, prior to using its right of access. In an emergency or outage situation, where there is no access to an AC disconnect/isolation device such as a switch or breaker, UGI may disconnect the electrical service to the premise.
6. **Exterior AC Disconnect Switch / Isolation Device.** Small generator facilities shall be capable of being isolated from the UGI system by means of a lockable, visible-break isolation device accessible by UGI. The isolation device shall be installed, owned and maintained by the owner of the small generation facility and located between the small generation facility and the point of interconnection. A draw-out type circuit breaker with a provision for padlocking at the draw-out position can be considered an isolation device for purposes of this requirement.

An interconnection customer may elect to provide UGI access to an isolation device that is contained in a building or area that may be unoccupied and locked or not otherwise readily accessible to UGI, by installing a lockbox provided by UGI that shall provide ready access to the isolation device. The interconnection customer shall install the lockbox in a location that is readily accessible by UGI and the interconnection customer shall permit UGI to affix a placard in a location of its choosing that provides clear instructions to UGI operating personnel on access to the isolation device. The interconnection customer, at its option, may provide and install both the lockbox & placard.

7. **Operations / Disconnection.** UGI may temporarily disconnect the Customer-Generator Facility upon occurrence of the following conditions:
 - 7.1. For scheduled outages upon reasonable notice,
 - 7.2. For unscheduled outages or emergency conditions,
 - 7.3. If UGI determines that the Customer-Generator Facility does not operate in a manner consistent with this Application/Agreement.
 - 7.4. If UGI determines that continued operation of the Customer-Generator Facility is a safety hazard to UGI personnel or to the general public.

Exhibit B

- 7.5. In the event the interconnection equipment used by the Customer-Generator Facility is de-listed by the Nationally Recognized Testing Laboratory that provided the listing at the time the interconnection was approved and UGI ascertains that the continued operation has the potential to cause a safety, reliability or a power quality problem.
8. **Indemnification.** The Parties shall at all times indemnify, defend, and save the other Party harmless from, any and all damages, losses, claims, including claims and actions relating to injury to or death of any person or damage to property, demand, suits, recoveries, costs and expenses, court costs, attorney fees, and all other obligations by or to third parties, arising out of or resulting from the other Party's action or inactions of its obligations under these terms and conditions on behalf of the indemnifying Party, except in cases of gross negligence or intentional wrongdoing by the indemnified Party.
9. **Limitation of Liability.** Each party's liability to the other party for any loss, cost, claim, injury, liability, or expense, including reasonable attorney's fees, relating to or arising from any act or omission in its performance of these terms and conditions, shall be limited to the amount of direct damage actually incurred. In no event shall either party be liable to the other party for any indirect, incidental, special, consequential, or punitive damages of any kind whatsoever.
10. **Termination.** This Application/Agreement may be terminated under the following conditions:
- 10.1. By Customer-Generator. The Customer-Generator may terminate this Application/Agreement by providing written notice to UGI.
- 10.2. By the utility. UGI may terminate this Application/Agreement if the Customer-Generator fails to remedy a violation of terms of this Application/Agreement upon written notice and a reasonable opportunity to cure.
11. **Permanent Disconnection.** In the event the Application/Agreement is terminated, UGI shall have the right to disconnect its facilities or direct the Customer-Generator to disconnect its Customer-Generator Facility.
12. **Survival Rights.** This Application/Agreement shall continue in effect after termination to the extent necessary to allow or require either Party to fulfill its rights or obligations that arose under the Application/Agreement.
13. **Assignment/Transfer of Ownership of the Customer-Generator Facility:** This Application/Agreement shall survive the transfer of ownership of the Customer-Generator Facility to a new owner unless the new owner terminates this Application/Agreement and so notifies UGI in writing. UGI will be responsible for contacting the new customer to execute a new Application/Agreement or assignment agreement, in order for the new owner to be treated as a Net Metering customer.

Exhibit B

14. **Definitions.** The capitalized terms used herein, and the definitions of such terms, are as those used in Regulations by the Pennsylvania Public Utility Commission at 52 Pa. Code § 75.22, relating to Interconnection Standards and Definitions.
15. **Notice.** Unless otherwise provided in this Application/Agreement, any written notice, demand, or request required or authorized in connection with this Application/Agreement (“Notice”) shall be deemed properly given if delivered in person, delivered by Electronic Mail (E-mail) delivered by recognized national courier service, or sent by first class mail, postage prepaid, to the person specified below:

If to UGI:

The contact listed on the UGI website as the primary contact for the company listed in the Customer-Generator’s Facility Information section on Page 1 of the Interconnection Application/Agreement.

If to Customer-Generator:

The contact listed in the Legal Name and Mailing Address of Customer-Generator section on Page 1 of the Interconnection Application/Agreement. The Customer-Generator is responsible for notifying UGI of any change in the contact party information.

In the event the original applicant sells or otherwise transfers ownership of the property listed in the Customer-Generator Facility’s Information section listed on Page 1 of the Interconnection Application/Agreement-Part 1, the original applicant shall provide UGI with the appropriate contact information for the new owner of the property. Upon any subsequent transfer of ownership, the then current owner shall provide UGI with the new owner’s information.

Exhibit C

UGI INTERCONNECTION APPLICATION

For a Level 2, 3 or 4 Review - Applicants proposing to install generation approaching 2,000 kW or larger should contact UGI for guidance in determining the appropriate application process.

(To be filled out and submitted prior to installation)

CUSTOMER GENERATOR CONTACT INFORMATION

Legal Name and Mailing Address of Customer-Generator: (if an Individual, Individual's Name)

Name: _____

Mailing Address: _____

City: _____ State: _____ Zip Code: _____

Contact Person (If other than Above): _____

Mailing Address (If other than Above): _____

Telephone (Daytime): _____ (Evening): _____

Facsimile Number: _____ E-Mail Address: _____

Alternative Contact Information: (if different from Customer-Generator above)

Name: _____

Mailing Address: _____

City: _____ State: _____ Zip Code: _____

Telephone (Daytime): _____ (Evening): _____

Facsimile Number: _____ E-Mail Address: _____

The Customer-Generator Facility's Information:

Facility Address: _____

City: _____ State: PA _____ Zip Code: _____

Nearest Crossing Street: _____

Electric Distribution Company ("EDC"): UGI Utilities, Inc.

Account #: _____ Meter #: _____

Existing Service Voltage: _____ VAC Existing Service Capacity: _____ Amps _____ Phase

Current Annual Energy Consumption: _____ kWh Estimated In-service Date: _____

Do you plan to export power¹? _____

If Yes, Estimated Maximum: _____ kW_{AC}, Estimated Gross Annual Energy Production: _____ kWh

One-line Diagram Attached (Required): _____ Site Plan Attached (Required): _____

Energy Source: _____ Gross Generator Rating: _____ kW_{AC}

Utility Accessible Disconnect or Lock Box: _____

Requested Level of Review: _____ **Type of Generation Equipment:** _____

¹If net metering is anticipated, a Net Metering – Application for Service should be submitted with this application.

Exhibit C

Equipment Installation Contractor: Indicate by owner if applicable

Name: _____
Mailing Address: _____
City: _____ State: _____ Zip Code: _____
Contact Person (If other than Above): _____
Telephone (Daytime): _____ (Evening): _____
Facsimile Number: _____ E-Mail Address: _____

Electrical Contractor: (If Applicable) Indicate if not applicable

Name: _____
Mailing Address: _____
City: _____ State: _____ Zip Code: _____
Contact Person (If other than Above): _____
Telephone (Daytime): _____ (Evening): _____
Facsimile Number: _____ E-Mail Address: _____

Consulting Engineer: (If Applicable) Indicate if not applicable

Name: _____
Mailing Address: _____
City: _____ State: _____ Zip Code: _____
Contact Person (If other than Above): _____
Telephone (Daytime): _____ (Evening): _____
Facsimile Number: _____ E-Mail Address: _____

Application Fee:

The Applicant shall deposit a not refundable application fee which is approved by the Pennsylvania Public Utility Commission and is listed on UGI’s Website. Depending on the level of review and nature of the energy generating equipment, additional study and review fees, as permitted by Pennsylvania Public Utility Commission Regulations may be required and are not a part of the aforementioned application fee.

Application Fee Enclosed: _____ Amount: _____

Customer-Generator Insurance Disclosure:

General Liability Insurance coverage is not required under Pennsylvania Public Utility Commission Regulations. However, the Customer still has responsibility and/or liability for any damage(s) or injury(ies) caused by the Customer-generator Facility and/or the Customer’s Interconnection Facilities. The Customer-Generator is advised to consider obtaining appropriate coverage.

Customer-Generator Signature:

I hereby certify that to the best of my knowledge, all of the information provided in this Application is accurate.

Legal Name of Customer-Generator: _____

Customer-Generator Signature: _____ Date: _____

Printed Name: _____ Title: _____

Exhibit C

UGI INTERCONNECTION APPLICATION
Customer-Generator Equipment Information for Inverter Based Systems
(May be applicable to a Level 2, 3 or 4 Review)

DC Source information:

Energy Source: _____

DC Source Rating: _____ kW_{DC}

Nominal DC Voltage: _____ V_{DC}

Ampere Rating: _____ Amps_{DC}

Inverter Information:

Inverter Manufacturer: _____

Inverter Type; _____

Model Number of Inverter: _____

Number of Units¹: _____

Inverter Rating: _____ kW_{AC}

Ampere Rating: _____ Amps_{AC}

Power Factor: _____%,

Number of Phases: _____

Frequency: _____ Hz,

IEEE1547/UL1741 Certification²: _____

Evidence of Certification attached: _____

¹ Attach additional sheets as necessary in the event of multiple units of various types/sizes

² The applicant is encouraged to provide evidence of IEEE1547/UL1741 Test Certification with this application, and may be required to do so in the event such evidence is not readily accessible UGI.

Exhibit C

UGI INTERCONNECTION APPLICATION

Customer-Generator Equipment Information for Parallel Rotating Equipment Based Systems

(May be applicable to a Level 3 or 4 Review)

It is anticipated that many projects proposing to utilize directly coupled rotating generation may not have the specific information necessary for UGI to adequately evaluate the impact of the proposed facility on UGI's electrical distribution system at the time of the initial application. Often times the equipment for which this information is needed hasn't been specified. The type information necessary may be conveyed during a scoping meeting or other correspondence early on during the project development. Depending on the nature of the project, this is often an iterative process. Different UGI analytical systems may require that data be provided conforming to specific standard formats which will be conveyed by UGI. While not all inclusive, examples of the information commonly required are as follows:

For Synchronous Machines: Copies of the Saturation Curve and the Vee Curve - Salient vs. Non-Salient - Torque: (lb-ft) - Rated RPM - Field Amperes at rated generator voltage and current and % PF over-excited - Maximum Leading and Lagging Reactive Output Power - Type of Exciter - Output Power of Exciter - Type of Voltage Regulator - Direct-axis Synchronous Reactance (X_d) ohms - Direct-axis Transient Reactance (X'_d) ohms - Direct-axis Sub-transient Reactance (X''_d) ohms - Rated Nominal Frequency

For Induction Machines: Rotor Resistance (R_r) ohms - Exciting Current (Amps) - Rotor Reactance (X_r) (ohms) - VARs (No Load) - Magnetizing Reactance (X_m) - Stator Resistance (R_s) - VARs (Full Load) - Stator Reactance (X_s) – Short Circuit Reactance (X''_d) - Number of Phases - Frame Size - Design Letter - Temp. Rise °C

Protective Equipment: The Customer Generator shall design a protective scheme that will provide the protective functions specified in IEEE 1547 and submit it to the EDC for review & acceptance. The submittal shall include a single line drawing showing the location of instrument transformers (current and voltage) and the location of the relays, breakers and fuses. Indicate the manufacturer and model number of each type of device. Breaker data shall include continuous and interrupting ampere ratings. If relays are used, indicate function, the tripping source and its voltage.

Isolation Transformer: Manufacturer - Manufacturer reference number - Nominal Voltage Ratio – High / Low Voltage Taps - Number of Units - Rated kVA – Percentage Impedance @ kVA base – High / Low Voltage Winding Configuration.

Exhibit D

UGI Level 2, 3 or 4 Interconnection Agreement

This Interconnection Agreement ("Agreement") is made and entered into this _____ day of _____, _____, by UGI Utilities, Inc. – Electric Division, ("UGI"), and _____ ("Customer-Generator"), each hereinafter sometimes referred to individually as "Party" or both referred to collectively as the "Parties". In consideration of the mutual covenants set forth herein, the Parties agree as follows:

- 1) **Scope of Agreement** -- This Agreement sets forth the conditions under which UGI and the Customer-Generator agree that one or more generating facilities as further described in Attachment A, with an installed nameplate gross capacity of _____ kW ("Facility" or "Facilities") may be interconnected to the UGI's distribution system. This Agreement is applicable to interconnection requests governed by the rules and Regulations of the Pennsylvania Public Utility Commission.

- 2) **Construction of the Customer-Generator Facility.** The Customer-Generator may proceed to construct (including operational testing not to exceed 2 hours) the Customer-Generator Facility once the approval to install the Customer-Generator Facility has been received from UGI. The Customer-Generator Facility shall be constructed in accordance with information provided in the Interconnection Application, IEEE 1547 and the Pennsylvania Public Utility Commission's Regulations.

The Applicant shall notify UGI of any changes to the proposed Customer-Generator Facility that would be subject to the criteria for a Level 2, 3 or 4 review (E.G., Inverter Manufacturer/Model Number, Size, etc.).

Once an Interconnection Request is deemed complete, any modification to the proposed Customer-Generator Facility that would affect the application review criteria for a Level 2, 3 or 4 review that is not agreed to in writing by UGI, shall require submission of a new Interconnection Application, subject to the provisions of the Pennsylvania Public Utility Commission's rules and Regulations.

- 3) **Interconnection and Operation.** The Customer-Generator may interconnect and operate the Customer-Generator Facility with UGI's system once all of the following have occurred:
 - a) **Electrical Inspection:** Upon completing construction, the Customer-Generator shall have the Customer-Generator Facility inspected or otherwise certified by the local electrical wiring inspection authority having jurisdiction, that the facility meets the requirements of the National Electric Code.
 - b) **Certificate of Completion:** The Applicant shall provide UGI with a completed copy of the Certificate of Completion, including evidence of the electrical

Exhibit D

inspection by the local authority having jurisdiction. The evidence of completion of the electrical inspection may be provided on inspection forms used by local inspecting authorities.

- c) **Inspection:** UGI has either completed its inspection or waived the right to inspection in this Agreement. After receipt of the Certificate of Completion, UGI may, upon reasonable notice and at a mutually convenient time, conduct an inspection of the Customer-Generator Facility and observe a Witness Test to ensure that all equipment has been appropriately installed and that all electrical connections have been made in accordance with its requirements.
 - d) **Metering:** Revenue quality metering equipment shall be installed and tested by UGI. (Note: UGI may allow interconnected operations prior to the meter installation.)
 - e) **Acceptance:** UGI's representative has signed and returned the Certificate of Completion or provided notification by electronic mail or other acceptable means that the requirements for interconnection are complete and interconnection of the Customer-Generator Facility is accepted for parallel operation.
- 4) **Periodic Testing.** All interconnection-related protective functions and associated batteries shall be periodically tested at intervals specified by the manufacturer, system integrator, or authority that has jurisdiction over the Customer-Generator Facility interconnection. Periodic test reports or a log for inspection shall be maintained.
 - 5) **Safe Operations and Maintenance.** The Customer-Generator shall be fully responsible to operate, maintain, and repair the Customer-Generator Facility as required to ensure that the Customer-Generator Facility complies at all times with the interconnection standards it has been certified to meet.
 - 6) **Access.** UGI shall have access to the metering equipment and the disconnecting means of the Customer-Generator Facility at all times. UGI shall provide reasonable notice to the Customer-Generator, when possible, prior to using its right of access. In an emergency or outage situation, where there is no access to an AC disconnecting means such as a switch or breaker, UGI may disconnect the service to the premises.
 - 7) **Exterior AC Disconnect Switch / Isolation Device.** Small generator facilities shall be capable of being isolated from UGI by means of a lockable, visible-break isolation device accessible by UGI. The isolation device shall be installed, owned and maintained by the Customer-Generator and located between the small generation facility and the point of interconnection. A draw-out type circuit breaker with a provision for padlocking at the draw-out position can be considered an isolation device for purposes of this requirement.

A Customer-Generator may elect to provide UGI access to an isolation device that is contained in a building or area that may be unoccupied and locked or not otherwise readily accessible to UGI, by installing a lockbox provided by UGI that shall provide ready access to the isolation device. The Customer-Generator shall install the lockbox

Exhibit D

in a location that is readily accessible by UGI and the Customer-Generator shall permit UGI to affix a placard in a location of its choosing that provides clear instructions to UGI operating personnel on access to the isolation device. The Customer-Generator, at its option, may provide and install both the lockbox and placard.

- 8) **Operations / Disconnection.** UGI may temporarily disconnect the Customer-Generator Facility upon occurrence of the following conditions:
 - a) For scheduled outages upon reasonable notice,
 - b) For unscheduled outages or emergency conditions,
 - c) If UGI determines that the Customer-Generator Facility does not operate in a manner consistent with this Application/Agreement,
 - d) If UGI determines that continued operation of the Customer-Generator Facility is a safety hazard to UGI's personnel or to the general public,
 - e) In the event the interconnection equipment used by the Customer-Generator Facility is de-listed by the Nationally Recognized Testing Laboratory that provided the listing at the time the interconnection was approved and UGI ascertains that the continued operation has the potential to cause a safety, reliability or a power quality problem.
- 9) **Indemnification.** The Parties shall at all times indemnify, defend, and save the other Party harmless from, any and all damages, losses, claims, including claims and actions relating to injury to or death of any person or damage to property, demand, suits, recoveries, costs and expenses, court costs, attorney fees, and all other obligations by or to third parties, arising out of or resulting from the other Party's action or inactions of its obligations under these terms and conditions on behalf of the indemnifying Party, except in cases of gross negligence or intentional wrongdoing by the indemnified Party.
- 10) **Limitation of Liability.** Each party's liability to the other party for any loss, cost, claim, injury, liability, or expense, including reasonable attorney's fees, relating to or arising from any act or omission in its performance of these terms and conditions, shall be limited to the amount of direct damage actually incurred. In no event shall either party be liable to the other party for any indirect, incidental, special, consequential, or punitive damages of any kind whatsoever.
- 11) **Termination.** This Application/Agreement may be terminated under the following conditions:
 - a) By Customer-Generator. The Customer-Generator may terminate this Application/Agreement by providing written notice to UGI.
 - b) By UGI. UGI may terminate this Application/Agreement if the Customer-Generator fails to remedy a violation of terms of this Application/Agreement upon written notice and a reasonable opportunity to cure.

Exhibit D

- 12) **Permanent Disconnection.** In the event the Application/Agreement is terminated, UGI shall have the right to disconnect its facilities or direct the Customer-Generator to disconnect its Customer-Generator Facility.
- 13) **Survival Rights.** This Application/Agreement shall continue in effect after termination to the extent necessary to allow or require either Party to fulfill its rights or obligations that arose under the Application/Agreement.
- 14) **Assignment/Transfer of Ownership of the Customer-Generator Facility:** This Application/Agreement shall survive the transfer of ownership of the Customer-Generator Facility to a new owner unless the new owner terminates this Application/Agreement and so notifies UGI in writing. UGI will be responsible for contacting the new customer to execute a new Application/Agreement or assignment agreement, in order for the new owner to be treated as a Net Metering customer.
- 15) **No Third Party Beneficiaries** - This Agreement is not intended to and does not create rights, remedies, or benefits of any character whatsoever in favor of any persons, corporations, associations, or entities other than the Parties, and the obligations herein assumed are solely for the use and benefit of the Parties, their successors in interest and, where permitted, their assigns.
- 16) **No Waiver** - The failure of a Party to this Agreement to insist, on any occasion, upon strict performance of any provision of this Agreement will not be considered to waive the obligations, rights, or duties imposed upon the Parties.
- 17) **Definitions.** The capitalized terms used herein, and the definitions of such terms, are as those used in ANNEX A, TITLE 52. PUBLIC UTILITIES, PART 1. PUBLIC UTILITY COMMISSION, Subpart C., FIXED SERVICE UTILITIES, CHAPTER 75: ALTERNATIVE ENERGY PORTFOLIO STANDARDS, Subchapter C: "INTERCONNECTION STANDARDS."
- 18) **Notice.** Unless otherwise provided in this Application/Agreement, any written notice, demand, or request required or authorized in connection with this Application/Agreement ("Notice") shall be deemed properly given if delivered in person, sent by Electronic Mail (E-mail), sent by recognized national courier service, or sent by first class mail, postage prepaid, to the person specified below:

If to UGI:

The contact listed on UGI website as the primary contact for UGI listed in the Customer-Generator's Facility Information section on Attachment A of this Interconnection Agreement.

Exhibit D

If to Customer-Generator:

The contact listed in the Legal Name and Mailing Address of Customer-Generator section on Attachment A of this Interconnection Application. The Customer-Generator is responsible for notifying UGI of any change in the contact party information.

In the event the original applicant sells or otherwise transfers ownership of the property listed in the Customer-Generator Facility's Information section listed on Attachment A of the Interconnection Agreement, the original applicant shall provide UGI with the appropriate contact information for the new owner of the property. Upon any subsequent transfer of ownership, the then current owner shall provide UGI with the new owner's information.

- 19) **Governing Law and Regulatory Authority** - This Agreement shall be governed by, interpreted, construed, and enforced in accordance with the laws of the Commonwealth of Pennsylvania. This Agreement is subject to, and the Parties' obligations hereunder include, operating in full compliance with all valid, applicable federal, state, and local laws or ordinances, and all applicable rules, regulations, orders of, and tariffs approved by, duly constituted regulatory authorities having jurisdiction.

- 20) **Multiple Counterparts** -- This Agreement may be executed in two counterparts, each of which is deemed an original but all constitute one and the same instrument.

IN WITNESS WHEREOF, the Parties have caused this Agreement to be signed by their respective duly authorized representatives.

UGI Utilities, Inc. – Electric Division

Customer-Generator

BY: _____

BY: _____

NAME: _____

NAME: _____

TITLE: _____

TITLE: _____

DATE: _____

DATE: _____

DESCRIPTION OF FACILITY

For a Level 2, 3 or 4 Review Interconnection Agreement ¹

CUSTOMER-GENERATOR CONTACT INFORMATION

Legal Name and Mailing Address of Customer-Generator: (if an Individual, Individual's Name)

Name: _____

Mailing Address: _____

City: _____ State: _____ Zip Code: _____

Contact Person (If other than Above): _____

Mailing Address (If other than Above): _____

Telephone (Daytime): _____ (Evening): _____

Facsimile Number: _____ E-Mail Address: _____

Alternative Contact Information: (if different from Customer-Generator above)

Name: _____

Mailing Address: _____

City: _____ State: _____ Zip Code: _____

Telephone (Daytime): _____ (Evening): _____

Facsimile Number: _____ E-Mail Address: _____

The Customer-Generator Facility's Information:

Facility Address: _____

City: _____ State: PA Zip Code: _____

Account #: _____ Meter #: _____

Do you plan to export power? Select

If Yes, Estimated Maximum: _____ kW_{AC}, Estimated Gross Annual Energy Production: _____ kWh

One-line Diagram Attached (Required): Select Site Plan Attached (Required): Select

Energy Source: Select Gross Generator Rating: _____ kW_{AC}

Utility Accessible Disconnect or Lock Box: Select

¹ Customers proposing to install generation greater than 2,000 kW are required to contact UGI for the appropriate application procedures.

Exhibit E

UGI INTERCONNECTION APPLICATION/AGREEMENT - PART 2

With Terms and Conditions for Interconnection

For a Level 1 Review (Certified Inverter-based Units of 10kW and under)

(Final Agreement – to be filled out after installation)

Certificate of Completion¹

Customer Generator Information

Legal Name and Mailing Address of Customer-Generator (if an Individual, Individual's Name)

Name: _____

Mailing Address: _____

City: _____ State: _____ Zip Code: _____

Contact Person (If other than Above): _____

Mailing Address (If other than Above): _____

Telephone (Daytime): _____ (Evening): _____

Facsimile Number: _____ E-Mail Address: _____

The Customer-Generator Facility's Information:

Facility Address: _____

City: _____ State: PA Zip Code: _____

Nearest Crossing Street: _____

Electric Distribution Company ("UGI"): UGI Utilities Inc. – Electric Division

Account #: _____ Meter #: _____

Inverter Type: _____ Energy Source: _____

Number of Units: _____ Manufacturer: _____

Model Number of Inverter: _____ Inverter Rating: _____ kW_{AC}

(Attach additional sheets as necessary in the event of multiple units of various types/sizes)

Equipment Installation Contractor:

Check if owner-installed:

Name: _____

Mailing Address: _____

City: _____ State: _____ Zip Code: _____

Contact Person (If other than Above): _____

Telephone (Daytime): _____ (Evening): _____

Facsimile Number: _____ E-Mail Address: _____

The undersigned asserts that the Equipment has been installed in accordance with Part 1 of the Interconnection Application/Agreement as well as all applicable codes and regulations.

Signed: _____ Date: _____

Printed Name: _____ Title: _____

Exhibit E

Electrical Contractor: (if Different from Equipment Installation Contractor)

Name: _____

Mailing Address: _____

City: _____ State: _____ Zip Code: _____

Contact Person (If other than Above): _____

Telephone (Daytime): _____ (Evening): _____

Facsimile Number: _____ E-Mail Address: _____

The undersigned asserts that the Equipment has been installed in accordance with Part 1 of the Interconnection Application/Agreement as well as all applicable codes and regulations.

Signed: _____ Date: _____

Printed Name: _____ Title: _____

Electrical Inspection²:

The system has been installed and inspected in compliance with the provisions of the National Electrical Code and other applicable codes and standards as well as the local Building/Electrical Code of: _____

(Appropriate Governmental Authority)

By: _____ Date: _____

Customer-Generator Signature³:

The Customer-Generator Facility is complete and ready for interconnected operation in accordance with all of the provisions of the Interconnection Application/Agreement. The Customer-Generator acknowledges that it shall **not** operate the Facility until receipt of Final Acceptance (below), or as otherwise provided for by regulation.

Signed: _____ Date: _____

Printed Name: _____ Title: _____

Final Acceptance to Interconnect Small Generator Facility (for Use by UGI Only)

The requirements for interconnection are complete and interconnection of the Customer-Generator Facility is accepted upon signature and return of this Certificate of Completion by UGI, below:

Electric Distribution Company waives Witness Test? (Initial) Yes (____) No (____)

If no, Successful Witness Test Date: _____ Passed: (Initial) (____)

UGI Signature: _____ Date: _____

Printed Name: _____ Title: _____

¹ The Customer s Generator facility shall be constructed in accordance with the information provided on Page 1 of the Interconnection Application Agreement – Part 1.

² Completion of local inspections may be designated on inspection forms used by local inspecting authorities.

³ As a condition of interconnected operation, you are required to send/fax/e-mail a completed signed copy of this Certificate of Completion to UGI at the address in the Terms & Conditions for Interconnection.

Exhibit F

CERTIFICATE OF COMPLETION

For a Level 2, 3 or 4 Review Interconnection Agreement

Customer-Generator Information

Legal Name and Mailing Address of Customer-Generator (if an Individual, Individual's Name)

Name: _____

Mailing Address: _____

City: _____ State: _____ Zip Code: _____

Contact Person (If other than Above): _____

Mailing Address (If other than Above): _____

Telephone (Daytime): _____ (Evening): _____

Facsimile Number: _____ E-Mail Address: _____

The Customer-Generator Facility's Information:

Facility Address: _____

City: _____ State: PA Zip Code: _____

Nearest Crossing Street: _____

Electric Distribution Company ("EDC"): UGI Utilities, Inc. – Electric Division _____

Account #: _____ Meter #: _____

Inverter Type; Select Type Energy Source: Select _____

Number of Units: _____ Manufacturer: _____

Model Number of Inverter: _____ Inverter Rating: _____ kW_{AC}

(Attach additional sheets as necessary in the event of multiple units of various types/sizes)

Equipment Installation Contractor:

Check if owner-installed:

Name: _____

Mailing Address: _____

City: _____ State: _____ Zip Code: _____

Contact Person (If other than Above): _____

Telephone (Daytime): _____ (Evening): _____

Facsimile Number: _____ E-Mail Address: _____

The undersigned asserts that the Equipment has been installed in accordance with of the Interconnection Application as well as all applicable codes and regulations.

Signed: _____ Date: _____

Printed Name: _____ Title: _____

Exhibit F

Electrical Contractor: (if Different from Equipment Installation Contractor)

Name: _____

Mailing Address: _____

City: _____ State: _____ Zip Code: _____

Contact Person (If other than Above): _____

Telephone (Daytime): _____ (Evening): _____

Facsimile Number: _____ E-Mail Address: _____

The undersigned asserts that the Equipment has been installed in accordance with the Interconnection Application as well as all applicable codes and regulations.

Signed: _____ Date: _____

Printed Name: _____ Title: _____

Electrical Inspection¹:

The system has been installed and inspected in compliance with the provisions of the National Electrical Code and other applicable codes and standards as well as the local Building/Electrical Code of: _____

(Appropriate Governmental Authority)

By: _____ Date: _____

Customer-Generator Signature²:

The Customer-Generator Facility is complete and ready for interconnected operation in accordance with all of the provisions of the Interconnection Application/Agreement. The Customer-Generator acknowledges that it shall **not** operate the Facility until receipt of Final Acceptance (below), or as otherwise provided for by regulation.

Signed: _____ Date: _____

Printed Name: _____ Title: _____

¹ Completion of local inspections may be designated on inspection forms used by local inspecting authorities.

² As a condition of interconnected operation, you are required to send/fax/e-mail a completed signed copy of this Certificate of Completion to UGI at the address in the Terms & Conditions for Interconnection.

Exhibit F

Final Acceptance to Interconnect Small Generator Facility (for Use by UGI Only)

The requirements for interconnection are complete and interconnection of the Customer-Generator Facility is accepted upon signature and return of this Certificate of Completion or by notification by electronic mail or other acceptable means by the UGI.

UGI waives Witness Test? **(Initial)** Yes (____) No (____)

If no, Successful Witness Test Date: _____ Passed: **(Initial)** (____)

UGI Signature: _____ Date: _____

Printed Name: _____ Title: _____

Exhibit G

**UGI Utilities Inc. – Electric Division
Net Metering – Application for Service**

Customer’s Name: _____

Service Point Address: _____

City: _____ State: _____ Zip: _____

Account Number: _____

Contact Person: _____

Telephone Number: _____

Address: _____

City: _____ State: _____ Zip: _____

This application is for electric service under the UGI Utilities Inc. – Electric Division (UGI) Tariff Rule 18 - Net Metering (Rule 18) for the above customer (“Customer”). The Customer qualifies for Net Metering since its generator of electricity uses as its fuel approved under the Alternative Energy Portfolio Standards Act No. 2004-213 (“Act”), solar photovoltaic, wind power, hydropower, geothermal, biologically derived methane gas, biomass energy, coal mine methane, waste coal, demand-side management, municipal solid waste, by-products of the pulping process and wood manufacturing process, integrated combined coal gasification technology or a fuel cell/distributed generation that is located on the Customer’s premises and operates in parallel with the Company’s transmission and distribution systems and is intended primarily to offset part or all of the Customer’s requirements for electricity.

The Customer-generator facility qualifies for Net Metering as it is a _____ type generator, which is one of those qualifying facilities identified in Rule 18 and restated above. Total rated generating capacity of the Customer-generator to be used and billed under the Net Metering provision, is _____ kW (Not to exceed 50 kW residential, 3 MW non-residential and up to 5 MW under certain conditions as specified in the Act).

The Customer acknowledges that it has read Rule 18 and agrees to all terms and conditions contained therein including without limitation those specified in the Company’s interconnection tariff and the Company’s interconnection requirements. The customer agrees not to operate its generator in parallel with the Company’s electrical system without specific approval in accordance with the Company’s interconnection requirements.

Exhibit G

The Customer understands and agrees that a meter, which is capable of registering the flow of electricity in each direction, must be in service at the facility. If a meter is not in service with this capability, the Customer must submit a written request to the Company, and provide reasonable time for installation and UGI will not charge the Customer generator a fee or other type of charge unless the fee or charges would apply to other customers. (The customer-generator is responsible for the customer charge, demand charge and other applicable charges under the applicable Rate Schedule.)

Requested By:

Customer Name

Authorized Signature

Date

Approved By:

Company Signature

Name (Typed or Printed)

Date

Rejected:

Company Signature

Name (Typed or Printed)

Reason for Rejection

Date
